

Appendix 1 – Timeline

Identified Period	Time	Dates	Detail of Operations
The “Orphanage Years”		1930 – 1967	<p>This period relates to the operation of the Orphanage.</p> <p>Between 1962 and 1967 the organisation examined the opportunities for transitioning to a smaller group home structure in accordance with Government recommendations at that time.</p> <p>The first Group Home (Constitution Street, Aberdeen) was opened in 1962 and further homes were opened between this date and 1967 at which time the Orphanage closed.</p>
The “Group Home Years”		1967 – 1987	<p>During this period the organisation operated numerous group homes rather than one large residential facility.</p> <p>As explained, the first group homes were opened prior to 1967. From 1967 the organisation's focus was entirely on the provision of group homes.</p> <p>Throughout the 1980s the organisation experienced a further change in focus as public policy moved from a focus on accommodating children in homes towards fostering and similar services. During this time the organisation's services diversified and the group homes were either wound down or their purposes were changed to meet new needs.</p> <p>By 1987 only one group home remained in operation.</p>
The “Service Years”		1987 – 2014	<p>Throughout the 1980s the organisation's services diversified to meet new needs of the communities it served.</p> <p>During this time, residential care services were developed by the organisation for specific purposes. For example, respite care, residential accommodation for families and care for individuals with disabilities or who required additional support.</p> <p>Those services with a residential care aspect are set out within Appendix 3.</p>

Appendix 2 – Constitution and Governance

Year	Legal structure of organisation	Purposes of organisation	Reasons for changes to purposes and legal structure	Governance	Legal basis for undertaking residential care
1930 – 1969	<p>Operating under a trust scheme</p> <p>Loose regulation by the Educational Endowments Commission</p> <p>"Aberlour Orphanage Trust Scheme 1934"</p> <p>"Aberlour Orphanage Trust Scheme 1967"</p>	<p>"The purpose of the orphanage shall be to provide a comfortable home for orphans or necessitous children, of members of the Episcopal Church in Scotland, or others"</p> <p><i>Purpose as set out within the revised 1934 constitution.</i></p>	<p>Legal structure:</p> <p>Standard structure for operating an endowment/bequest based operation within this time period.</p> <p>Operations would have been governed by the organisation's Constitution.</p> <p>Purposes:</p> <p>Note the Constitution of the organisation underwent a serious of amendments during this time.</p> <p>The reason for these changes was generally in order to enable the organisation to expand, change or diversify its service offering.</p> <p>For example, the Children Act 1948 provided that</p>	<p>Trustees: the bishop, Dean and Registrar of the Diocese in which the Orphanage is situated and the Rector of St Margaret's, Aberlour.</p> <p>Office Bearers: Patrons and Patronesses, a Visitor, President, Vice-President, Treasurer, Warden and Solicitor.</p> <p>Managing Committee: Visitor, Treasurer, Warden and between eight and sixteen if the clergy and laity (subscribers to the Orphanage).</p> <p>Warden was responsible for the management of the Orphanage and day-to-day management of finances.</p> <p>It is our understanding that members were nominated by the</p>	<p>Approved purpose of the organisation's constitution.</p> <p>Registration with the Secretary of State (under The Children Act 1948).</p> <p>The organisation was approved by the local authorities who placed children in its care (presumably in furtherance of their duties under The Children Act 1948 and subsequent relevant legislation).</p> <p>Inspections: by local authorities and the Secretary of State on a relatively ad hoc basis and by the Educational Endowments Commission (from a constitutional and governance perspective).</p>

Year	Legal structure of organisation	Purposes of organisation	Reasons for changes to purposes and legal structure	Governance	Legal basis for undertaking residential care
			children accommodated at a voluntary home must be afforded facilities to receive a religious upbringing appropriate to the religious persuasion to which he belonged. This required the organisation to change its purposes to enable it to facilitate the care of children outwith the Episcopalian church.	subscribers. <i>Governance and management arrangements as set out within the revised 1934 constitution.</i>	
1969 - 1978	Operating under a new trust scheme – known as “The Aberlour Trust”	A copy of the constitution of the new trust scheme is unavailable; however, our understanding is that the purposes of the organisation remained substantially the same and were extended to enable the organisation to provide residential care for children in smaller group homes.	<p>Legal structure:</p> <p>Standard structure for operating an endowment/bequest based operation within this time period.</p> <p>Purposes:</p> <p>We understand changes were required to the trust scheme purposes during the 1960s to enable the organisation to operate small group homes rather than one large establishment.</p>	<p>A copy of each version of the trust scheme is not available therefore we cannot confirm the exact requirements of the governance structure of the organisation.</p> <p>Our understanding is that the rules for appointments to the Governing Board and Management Committee of the organisation required fewer links to the clergy with each new version of the trust scheme.</p> <p>The governing body under</p>	<p>Approved purpose of the organisation's constitution.</p> <p>Registration with the Secretary of State (under The Children Act 1948) and later, local authorities under the Social Work (Scotland) Act 1968.</p> <p>The organisation was approved by the local authorities who placed children in its care (presumably in furtherance of their duties under The Children Act 1948 and subsequent</p>

Year	Legal structure of organisation	Purposes of organisation	Reasons for changes to purposes and legal structure	Governance	Legal basis for undertaking residential care
			Changes were also required from time to time to take account of the changing requirements of the organisation's governance structure.	<p>The Aberlour trust scheme 1968 contained only one clergyman, the Bishop of Aberdeen and Orkney, and was made up of representatives of:</p> <ul style="list-style-type: none"> a) the Primus of the Scottish Episcopalian Church; b) the Church Council; c) the Scottish Council of Social Services; d) the Association of Directors or Education; and e) the Scottish Counties of Cities Association. <p>Our understanding is that members were nominated by the subscribers.</p>	<p>relevant legislation).</p> <p>Inspections: by local authorities and the Secretary of State and presumably also by the Educational Endowments Commission (from a constitutional and governance perspective).</p>
1978 - 2006	Operating under a further revised trust scheme – known as “The Aberlour Child Care Trust 1978” Came into operation 24	A copy of the constitution of the new trust scheme is unavailable; however, our understanding is that the purposes of the organisation remained	<p>Legal structure:</p> <p>Standard structure for operating an endowment/bequest based operation within</p>	A copy of each version of the trust scheme is not available therefore we cannot confirm the exact requirements of the governance structure of	<p>Approved purpose of the organisation's constitution.</p> <p>Registration with local authorities under the</p>

Year	Legal structure of organisation	Purposes of organisation	Reasons for changes to purposes and legal structure	Governance	Legal basis for undertaking residential care
	July 1978.	substantially the same and were extended to enable the organisation to provide services in addition to those involving residential care.	<p>this time period.</p> <p>Operations would have been governed by the organisation's Constitution.</p> <p>Purposes:</p> <p>Changes were required to the organisation's constitution to enable the organisation to operate new and diverse services in addition to the provision of residential care.</p> <p>Changes were also required to take account of the changing requirements of the organisation's governance structure.</p>	<p>the organisation.</p> <p>Our understanding is that the rules for appointments to the Governing Board and Management Committee of the organisation required fewer links to the clergy with each new version of the trust scheme.</p> <p>Our understanding is that members were nominated by the subscribers.</p>	<p>Social Work (Scotland) Act 1968 and Children (Scotland) Act 1995 and later, the Care Commission under the Regulation of Care Act 2001 and subsequent legislation.</p> <p>The organisation was approved by the local authorities who placed children in its care.</p> <p>Inspections: by local authorities under the Social Work (Scotland) Act 1968 and the Children (Scotland) Act 1995 and by the Care Commission under the Regulation of Care Act 2001 and subsequent legislation.</p>
2006 present	- Incorporation of a company limited by guarantee	<p>"The Trust shall have the following Charitable Purposes ("the Charitable Purposes")</p> <p>a) to provide, maintain and promote care, accommodation, support,</p>	<p>Legal structure:</p> <p>Standard structure for operating a charitable organisation such as the organisation.</p> <p>Purposes:</p>	<p>Governance by a Board of Trustees (between three and fourteen).</p> <p>The Trustees operate a number of committees drawn from the Board of Trustees to oversee</p>	<p>Approved purpose of the organisation's constitution.</p> <p>Registration with the Care Inspectorate under the Regulation of Care Act 2001 and subsequent</p>

Year	Legal structure of organisation	Purposes of organisation	Reasons for changes to purposes and legal structure	Governance	Legal basis for undertaking residential care
		<p>training and/or services for:</p> <p>i) children and young persons who are in need of care, protection, assistance and/or training, ii) in exceptional circumstances, those who were previously children or young persons assisted by the Trust who remain vulnerable and/or disadvantaged and therefore remain in need of care, protection, assistance and/or training, and</p> <p>iii) vulnerable and/or disadvantaged adults whose assistance by the Trust will provide care, protection and/or assistance to children and young persons, and</p> <p>b) to provide, maintain and promote education, training, consultancy, research and information</p> <p>i) for the beneficiaries listed in (a), as may be required to meet their specific educational and</p>	<p>The organisation's purposes were extended to enable the organisation to operate new and diverse services in addition to the provision of residential care.</p>	<p>discrete matters such as finance, marketing, policy, risk, etc.</p> <p>Up to eight Elected Trustees can be nominated for election to the Board by the Appointments Committee.</p> <p>Up to two Church Trustees can be nominated for election to the Board by the Scottish Episcopal Church, Edinburgh.</p> <p>Up to 4 Co-opted Trustees can be co-opted by the Board.</p> <p>Elected trustees must be chosen by the Board for election.</p>	<p>legislation.</p> <p>The organisation is approved by the local authorities who place children in its care.</p> <p>Inspections: by local authorities and by the Care Inspectorate under the Regulation of Care Act 2001 and subsequent legislation.</p>

Year	Legal structure of organisation	Purposes of organisation	Reasons for changes to purposes and legal structure	Governance	Legal basis for undertaking residential care
		<p>physical needs, ii) for current and prospective individuals and agencies involved, whether through the trust or otherwise, with issues relating principally to the types of beneficiaries listed in (a), and iii) for members of the public generally and decision makers about the activities of the Trust and issues arising therefrom."</p> <p><i>Note these are the present purposes of the organisation as have been amended from time to time.</i></p>			

Appendix 3 – Establishment Table

Name of Establishment	Location	Date Opened	Service Provision	Date Closed	Reason for Closure
Fostering					
Aberlour Fostering	West Bridge Mill Bridge Street Kirkcaldy KY1 1TE	2004	Fostering	N/A	N/A
Aberlour Fostering – Moray	6 Alba Place Elgin IV30 4JN	2002	Respite fostering – disability. A family-based scheme where approved foster carers provide regular respite breaks for children and young people up to the age of 18.	N/A	N/A
		1988	Small group home	2002	Transitioned to current use.
Sycamore Services					
Aberlour Sycamore Services	West Bridge Mill Bridge Street Kirkcaldy KY1 1TE	1983	Operating hub for Sycamore Services. Fostering provision on a long -term and short-term basis. Residential care for a maximum of 28 children and young people in five houses (houses listed	N/A	N/A

Name of Establishment	Location	Date Opened	Service Provision	Date Closed	Reason for Closure
			below).		
Aberlour Sycamore Services Whytemans Brae	44 Whytemans Brae Kirkcaldy KY1 2LE	Continued as the Sycamore Project in 1982/83	Residential	N/A	N/A
		1967	Residential care - small group home.	Transitioned to the Sycamore Project in 1982/83.	Transition to present use.
Aberlour Sycamore Services Cedar Avenue	16 Cedar Avenue Kirkcaldy KY1 2LP	1984	Residential (initially a "preparation for independence" unit)	N/A	N/A
Aberlour Sycamore Services Veronica	103 Veronica Crescent Kirkcaldy KY1 2LJ	1985	Residential	N/A	N/A
Aberlour Sycamore Services Bellyeoman "Number 6"	6 Bellyeoman Road Dunfermline KY13 0AD	2003	Residential care – small group home within the Sycamore project.	N/A	N/A
		1982/1983	Residential care for children with severe mental and physical disabilities.	Service transferred to	Transition to present use.

Name of Establishment	Location	Date Opened	Service Provision	Date Closed	Reason for Closure	
				11 Lorimer Gardens in 2003.		
		1967	Residential care – small group home.	Transitioned to provide care for children with disabilities in 1982/1983.	Transition to new use.	
Aberlour Services House	Sycamore Frankfield	22 Carlyle Road Kirkcaldy Fife KY1 1DB	2013	Residential	N/A	N/A
Aberlour Services Brae – Creative Therapy	Sycamore Whytemans Brae	44 Whytemans Brae Kirkcaldy KY1 2LE	N/A	Complimentary therapy	N/A	N/A
Sycamore Through Care and Aftercare	West Bridge Mill Bridge Street Kirkcaldy KY1 1TE	N/A	Complimentary service	N/A	N/A	
Aberlour Highland - Orinsay	Sycamore Orinsay	10 Resauria	1 April 2017	Residential	N/A	N/A

Name of Establishment	Location	Date Opened	Service Provision	Date Closed	Reason for Closure
	Inverness IV2 7HN	This service transferred to the organisation from Keys Cromlet Care.			
Aberlour Highlands – Sycamore Lochan Cottage	Lochan Cottage Lochyside Fort William PH33 7NX	1 April 2017 This service transferred to the organisation from Keys Cromlet Care.	Residential	N/A	N/A
Options Services <i>Note the Options Services provide services to communities in addition to the residential services listed below (e.g. parental support and in-school support).</i>					
Aberlour Aberdeen Options	10 Hopetoun Court Bucksburn Aberdeen AB21 9QS	October 1995	Respite residential care. Short-breaks to children with disabilities and their families, including overnight respite, day-care and community based outreach	N/A	N/A
Aberlour Borders Options	4 St Cuthberts Drive St Boswells	July 1995	Respite residential care. A range of short break respite care and support	N/A	N/A

Name of Establishment	Location	Date Opened	Service Provision	Date Closed	Reason for Closure
	Melrose TD6 0DF		services for parents and carers with children affected by learning disabilities in the Borders.		
Aberlour Options Fife – Lochwood Park	14 Lochwood Park Kingseat Dunfermline KY12 0UX	1997 Transfer from Linwood Road.	Respite residential care. Weekend and holiday residential respite provision for children with learning disabilities up to the age of 18.	N/A	N/A
Aberlour Options Ayrshire	49 Ardfin Road Prestwick KA9 2LE	July 1998	Respite residential care. Overnight respite care to children, young people and their families in South Ayrshire with complex learning and physical disabilities.	N/A	N/A
Aberlour Options Moray	6 Alba Place Elgin IV30 4JN	1988	Respite residential care. Respite services to children and young people with a moderate to severe learning disability and/or autism.	N/A	N/A
Aberlour Options Fife – MacNally House	McNally House 75 Wilmington Drive Glenrothes KY7 6UU	1994	Respite residential care. Weekend and holiday residential respite provision for children with learning disabilities up to the age of 18.	N/A	N/A
Aberlour Options	5 Bankfoot	2000	Respite residential care.	N/A	N/A

Name of Establishment	Location	Date Opened	Service Provision	Date Closed	Reason for Closure
Lothian	Prestonpans EH32 9SG		A range of short breaks and respite care for children and young people affected by a learning and/or physical disability in East Lothian and Midlothian.		
Aberlour Options (residential) Fife	11 Lorimer Gardens Dunfermline KY12 0BF	2003 Transfer of children from service at Belyeoman Road.	Residential care. A purpose-built house providing full-time, long term residential care for five children and young people with profound learning and physical disabilities.	N/A	N/A
The Orphanage					
The Orphanage	Aberlour	1875	Residential care.	1967	Change in the structure of the residential services provided by the organisation. Transition from one large establishment to a number of group homes.
Small Group Homes					
<i>Note that some smaller group homes were transitioned for use within the services outlined above. These are indicated above.</i>					

Name of Establishment	Location	Date Opened	Service Provision	Date Closed	Reason for Closure
<i>Note also that the dates given below are approximate. A chronological record of small group homes is not available and the information provided is to the best of our understanding having reviewed historic records.</i>					
Constitution Street	Leslie House, 67/69 Constitution Street, Aberdeen	Aug 1962	Residential care – girls who had left school and were in work/training.	Early 1971	Under capacity – no requirement amongst older girls for this type of residence and home not suitable for different services.
The Dowans	The Dowans, Aberlour	1963 (transition from Orphanage Nursery to a group home)	Residential care - small group home.	Nov 1970	No longer suitable for services. Expectation to transfer children to new Stirling home upon closure.
Bridge of Don	1 Seaview Road, Bridge of Don, Aberdeen	December 1964	Residential care - small group home. Transitioned in early 1980s to provide adolescent care.	December 1985	Under capacity and diversification of the Organisation's services.
Hopeman House	"The Neuk" Hopeman Elgin	1965 (used formerly as a holiday home)	Residential care - small group home.	1968	No longer suitable for services.

ABE.001.001.0072

Name of Establishment	Location	Date Opened	Service Provision	Date Closed	Reason for Closure
Bucksburn	26 Netherhills Avenue, Bucksburn, Aberdeen	Early 1965	Residential care - small group home. Transitioned to provide accommodation for disabled children.	1990	Premises no longer suitable for services. Services moved to Hopetoun Terrace.
Quarryhill	30 Quarryhill, Keith	Early 1967	Residential care - small group home.	1983	Under capacity and diversification of the Organisation's services.
Cumbernauld	152 MacGregor Road, Cumbernauld	1968	Residential care - small group home.	1984	Under capacity and diversification of the Organisation's services.
Deeside Gardens	210 Deeside Gardens, Aberdeen	1968/1969	Residential care - small group home.	1971	Under capacity and not suitable for other services.
Rubislaw Den	Rubislaw Den North, Aberdeen	1968	Admin and reception centre. Short stay residence.	1973	Purchase of new headquarters without short stay provision.
Cornton	Cornton, Stirling	February 1971	Residential care - small group home. Transitioned around 1985 to offer services to handicapped children.	1984/1985	Under capacity and diversification of the Organisation's services.
Paisley	Brewster Avenue,	Late 1971	Residential care - small group home.	1986	Under capacity and

Name of Establishment	Location	Date Opened	Service Provision	Date Closed	Reason for Closure
	Paisley		1984 – building leased to Quarriers and children moved into a council house until they were ready to leave the service.		diversification of the Organisation's services.
Clifton Road	Clifton Road, Woodside, Aberdeen	1971	Units for young mothers and children. Units for young adults with limited supervision – "Preparation for Independence". Note there was drift within the project remit which resulted in full supervision.	July 1989	Under capacity and diversification of the Organisation's services.
Hamilton	Hamilton	Late 1971	Residential care - small group home.	1981/1982	Under capacity and unsuitable for any of the organisation's new purposes.
Braehead	Braehead, Stirling	August 1973	Residential care - small group home.	March 1987	Under capacity and diversification of the Organisation's services.
Oaktree Square	Oaktree Square, Kirkcaldy	1982	Residential care - small group home.	1986	Under capacity and diversification of the Organisation's services.
Kildean	Stirling	Late 1982	Residential care – adolescent bedsit	February	Under capacity and

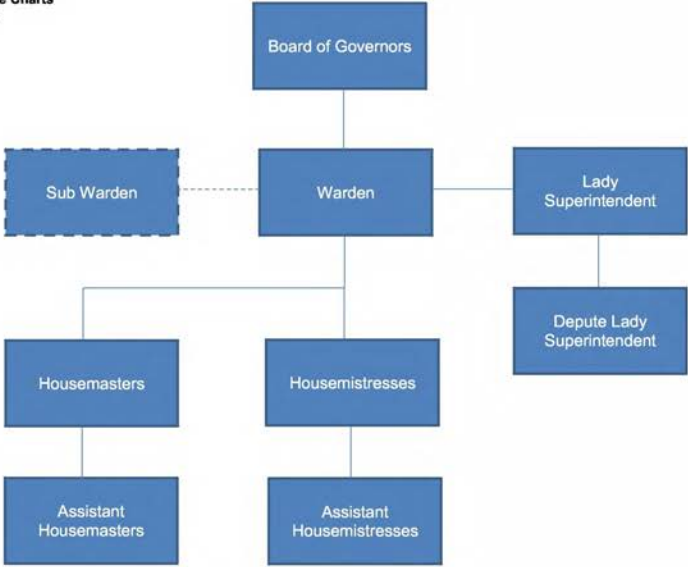
ABE.001.001.0074

Name of Establishment	Location	Date Opened	Service Provision	Date Closed	Reason for Closure
			accommodation.	1987	diversification of the Organisation's services.
Forresers Lee	Forresters Lee Crescent, Dunfermline	1984	Residential care - small group home – purchased to provide for the care of three children from Bellyeoman Road after its transition to care for handicapped children.	1987	Under capacity and diversification of the Organisation's services.
Garry Place	Garry Place, Falkirk	1989/1990	Preparation for Independence Unit. Originally for males aged 16 and up, changed in 1990 to allow admission at 15 and a half years of age, males and females.	November 1991	Under capacity and withdrawal of funding.
Linburn Road	21 Linburn Road	1989/1990	Respite care unit for children with disabilities.	1997	Building no longer suitable for services. Services moved to Lochwood Park.
Hopetoun Terrace	Hopetoun Terrace, Aberdeen	1990	Residential care - small group home for children with disabilities. Children moved here from the premises at 26 Netherhills Avenue, Aberdeen (premises too large).	April 1994	Service taken over by Partnership Housing.
Kaimhill	Aberdeen	June 1993	Residential care for children with disabilities.	By 2009	Children moved on to adult services.

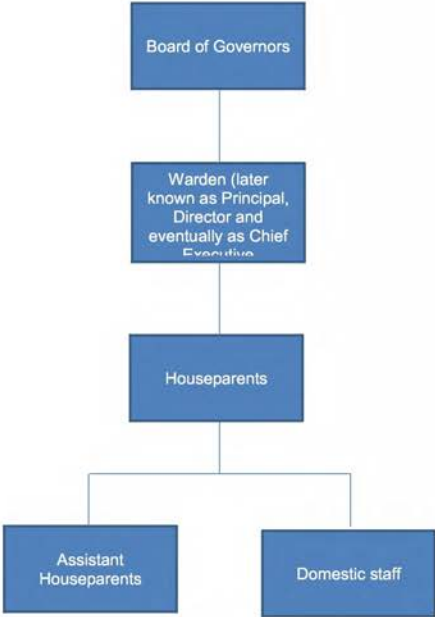
ABE.001.001.0075

Name of Establishment	Location	Date Opened	Service Provision	Date Closed	Reason for Closure
Kincorth	Aberdeen	February 1993	Residential care for children with disabilities.	Jan 2001	Underoccupancy and costs too high for local authority. Transfer of project to new provider – Partnership Housing.
Collydean	Glenrothes	May 1994	A part-time respite home	Around 2004/2005	Service no longer required.
Gaitside Place	Aberdeen	May 1996	Residential care for children with disabilities.	By 2009	Children moved on to adult services.

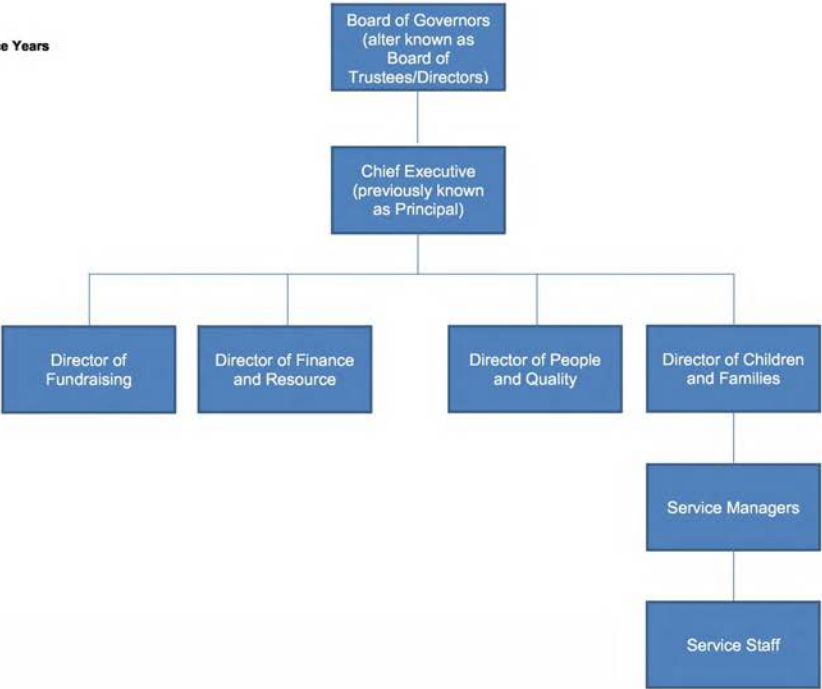
Appendix 4 – Structure Charts
The Orphanage Years



The Group Home Years



The Service Years



Current structure

